

1Ø, 250Vac (6/10/16/20/30A) : 단상 교류 250V 표준형  
**BST-2\*\*–SD Series (Standard type)**



■ **Features**

- Standard type
- Multi mount structure
- Dual PE system
- Light weight
- Low cost
- DIN Rail available

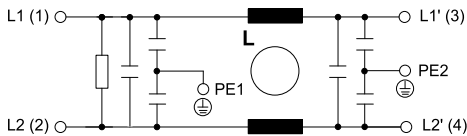
■ **Typical Applications**

- General purpose
- OA Equipments
- Datacom equipment
- Distribution panel

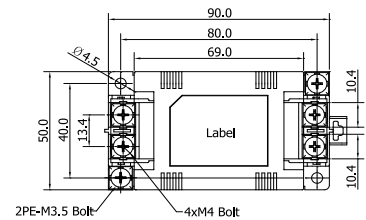
■ **Technical specifications**

Items	BST-206–SD	BST-210–SD	BST-216–SD	BST-220–SD	BST-230–SD
Rated Voltage (V <sub>R</sub> )	1Ø, 250Vac				
Operating frequency	50 / 60Hz				
Rated Currents @40°C (I <sub>R</sub> )	6A	10A	16A	20A	30A
Withstanding voltage test	Line to Earth : 2,121Vdc for 1min. or 2,750Vdc for 2sec. ( BHSTD–QUA–Q201 )				
Insulation resistance	500Vdc for 1min. 300MΩ Min. ( BHSTD–QUA–Q202 )				
Leakage current	1.6mA Max. at rated voltage ( BHSTD–QUA–Q203 )				
Voltage drop	1.0V Max. ( BHSTD–QUA–Q204 )				
Temperature range	25/100/21 (–25°C to +100°C), 20~95% RH at Operating & Storage				
Designed according to	IEC/EN 60939 / UL1283 / CSA 22.2 No.8				
Weight [g] (Max.)	240	240	230	230	235

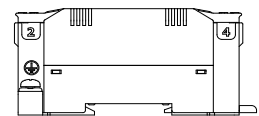
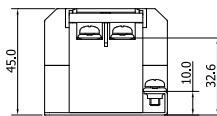
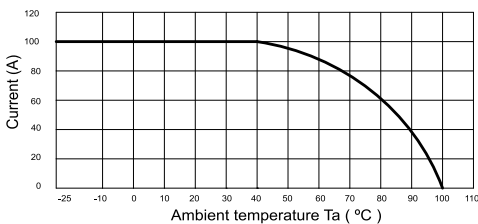
■ **Circuit Diagram**



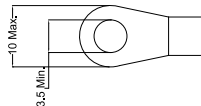
■ **Shape & Dimension (mm)**



■ **Derating Curve**



■ **Lug ring terminal**



■ **Recommended torque**

1.2 ~ 1.4 N · m