

**1Ø, 250Vac (6/10/16/20/30A) : 단상 교류 250V 고감쇄형
BST-2**-MS Series (High Atten. type)**



■ Features

- High attenuation
- Multi stage
- Dual PE system
- Multi mount structure
- Low cost
- DIN Rail available

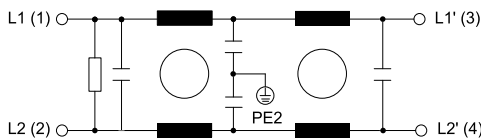
■ Typical Applications

- General purpose
- OA Equipments
- Datacom equipment
- Distribution panell

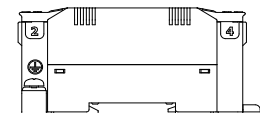
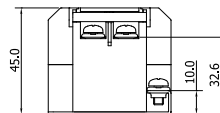
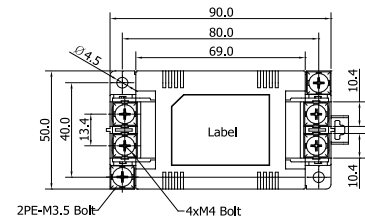
■ Technical specifications

Items	BST-206-MS	BST-210-MS	BST-216-MS	BST-220-MS	BST-230-MS
Rated Voltage (V _R)	1Ø, 250Vac				
Operating frequency	50 / 60Hz				
Rated Currents @40°C (I _R)	6A	10A	16A	20A	30A
Withstanding voltage test	Line to Earth : 2,121Vdc for 1min. or 2,750Vdc for 2sec. (BHSTD-QUA-Q201)				
Insulation resistance	500Vdc for 1min. 300MΩ Min. (BHSTD-QUA-Q202)				
Leakage current	1.5mA Max. at rated voltage (BHSTD-QUA-Q203)				
Voltage drop	1.5V Max. (BHSTD-QUA-Q204)				
Temperature range	25/100/21 (-25°C to +100°C), 20~95% RH at Operating & Storage				
Designed according to	IEC/EN 60939 / UL1283 / CSA 22.2 No.8				
Weight [g] (Max.)	225	220	220	220	220

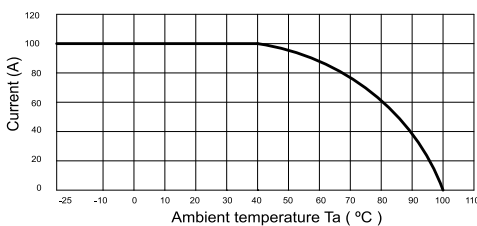
■ Circuit Diagram



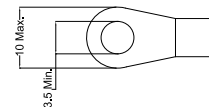
■ Shape & Dimension (mm)



■ Derating Curve



■ Lug ring terminal



■ Recommended torque

1.2 ~ 1.4 N · m