

■ Features

- Busbar type
- High current
- High attenuation
- Very compact & light weight
- Safety cover for dust

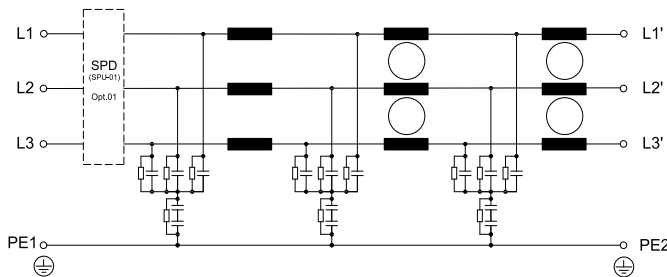
■ Typical Applications

- Solar inverter
- ESS, PCS
- AVR, UPS, Inverter, Converter
- Motor drive Equipments
- Various industrial applications
- ACB Panel, distribution Panel
- Industrial equipment

■ Technical specifications

Items	BBA-5150-MSV	BBA-5200-MSV	BBA-5250-MSV	BBA-5300-MSV	BBA-5400-MSV	BBA-5500-MSV	BBA-5600-MSV
Rated Voltage (V _R)	3Ø, 500Vac (450Vac when use Opt.01)						
Operating frequency	50 / 60Hz						
Rated Currents @40°C (I _R)	150A	200A	250A	300A	400A	500A	600A
Withstanding voltage test	Line to Earth : 2,828Vdc for 1min. or 3,200Vdc for 2sec. (BHSTD-QUA-Q201)						
Insulation resistance	500Vdc for 1min. 300MΩ Min. (BHSTD-QUA-Q202)						
Leakage current	140mA Max. at rated voltage (BHSTD-QUA-Q203)						
Voltage drop	1.0V Max. (BHSTD-QUA-Q204)						
Temperature range	25/100/21 (-25°C to +100°C), 20~95% RH at Operating & Storage						
Designed according to	IEC/EN 60939 / UL1283 / CSA 22.2 No.8						
Weight [kg] (Max.)	9.75	9.75	9.80	9.90	9.90	9.95	10.00

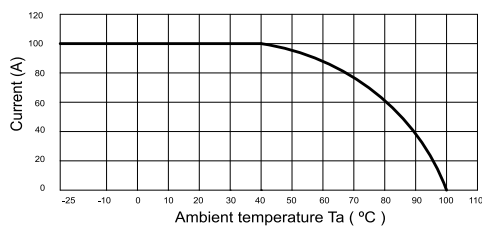
■ Circuit Diagram



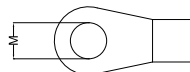
■ Shape & Dimension (mm)

See next page

■ Derating Curve



■ Lug ring terminal



■ Recommended torque

for M8 : 8.9 ~ 10.8 N · m
for M10 : 18 ~ 23 N · m

3Ø, 500Vac (150/200/250/300/400/500/600A) : 삼상 교류 500V 부스바형

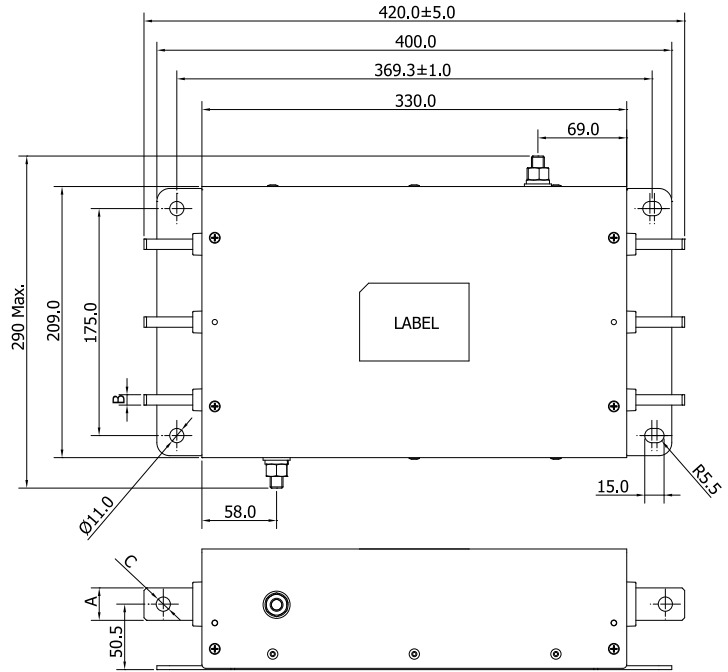
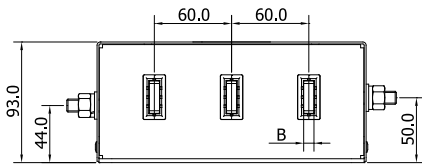
BBA-5***-MSV Series (Busbar type)

BEMF
EMI/EMC FILTER

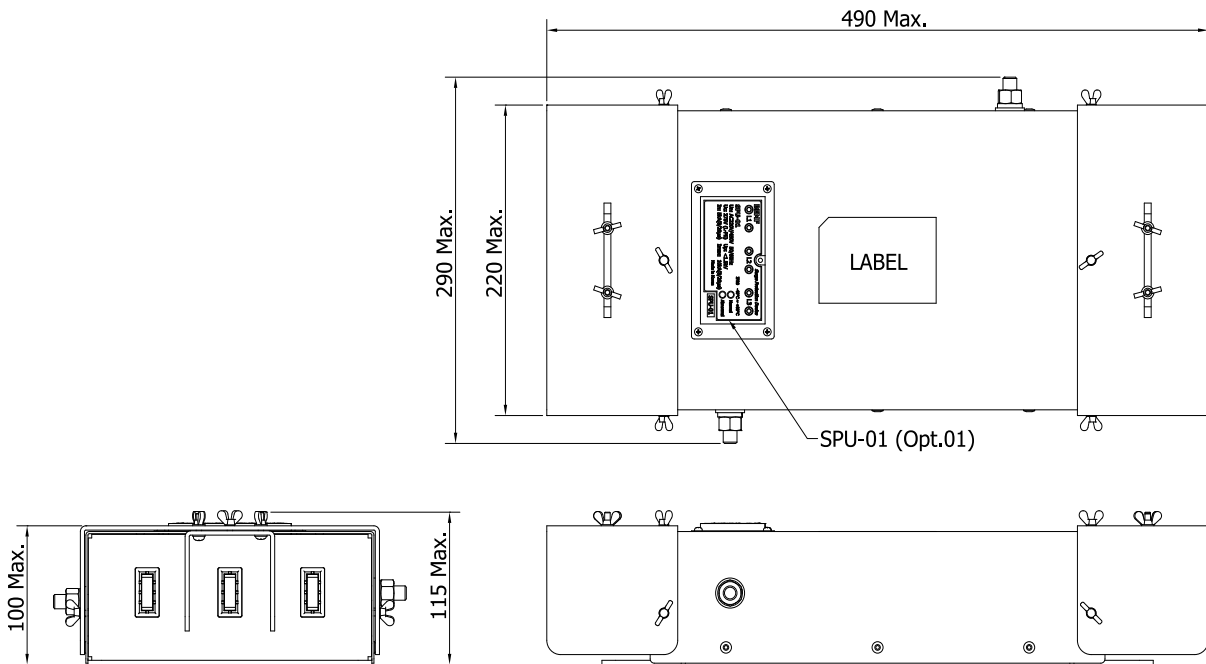
■ Shape & Dimension (mm)

Basic type

Rated current	A	B	C
150A	20	3	Ø9
200A	20	3	Ø9
250A	20	3	Ø9
300A	25	6	Ø11
400A	25	6	Ø11
500A	25	8	Ø11
600A	25	8	Ø11



Standard type (with SPU-01 & terminal protection cover)



TO THE WORLD BUMHAN ● WE MAKE FOR YOU ● TO THE WORLD BUMHAN ● WE MAKE FOR YOU ● TO THE WORLD BUMHAN ● WE MAKE FOR YOU ● TO THE WORLD BUMHAN