

TRANSFORMERS

1Ø Double Wind Transformers (단상 복권식 트랜스)

BHBD-DE, DF Series

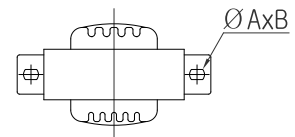
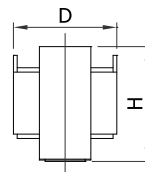
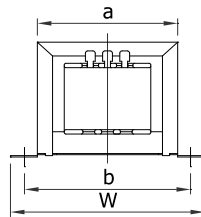
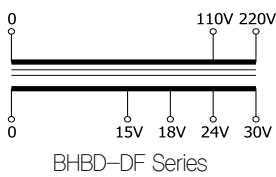
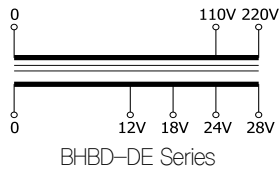


Technical Specifications

Primary Voltage		110_R220V
Secondary Voltage	BHBD-DE	12_18_R24_28V
	BHBD-DF	15_18_R24_30V
Operating Frequency		50/60Hz
Insulation Class		B Class
Standard		KS C

Typical Applications

Control panel, Transportation network signal control, Machinery, etc.



TO THE WORLD BUMHAN ● WE MAKE FOR YOU ● TO THE WORLD BUMHAN ● WE MAKE FOR YOU ● TO THE WORLD BUMHAN ● WE MAKE FOR YOU ● TO THE WORLD BUMHAN

Selection Table

Type (형식명)	Specification(사양)			Dimension (외형치수, mm)						Weight (kg)	Remark
	Pri.(V)	Sec.(V)	Cap.(VA)	W	D	H	a	b	ØA×B		
BHBD -DE3	220V 110V 0	24V	3	61	32	37	43	52	6×3.5	0.17	
-DE6		12V	6	69	36	42	50	59	6×4	0.27	
-DE12		0	12	83	44	50	60	71		0.42	
-DE24		28V	24	98	55	58	69	83	7×4	0.8	
-DE40		24V	40	108	61	68	79	95	8×5	1.1	
-DE50		18V	50	108	73	69	80	92	7×4.6	1.6	
-DE50		12V	0								
BHBD -DF3	220V 110V 0	30V	3	61	32	37	43	52	6×3.5	0.17	
-DF6		15V	6	69	36	42	50	59	6×4	0.27	
-DF12		0	12	83	44	50	60	71		0.42	
-DF24		30V	24	98	55	58	69	83	7×4	0.8	
-DF40		24V	40	108	61	68	79	95	8×5	1.1	
-DF50		18V	50	108	73	69	80	92	7×4.6	1.6	
-DF50		15V	0								

TO THE WORLD BUMHAN ● WE MAKE FOR YOU ● TO THE WORLD BUMHAN ● WE MAKE FOR YOU ● TO THE WORLD BUMHAN ● WE MAKE FOR YOU ● TO THE WORLD BUMHAN