

1Ø Double Wind Transformers (단상 복권식 트랜스)

BHBD-DG, DH Series

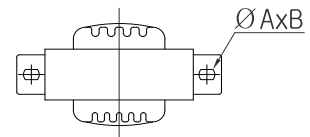
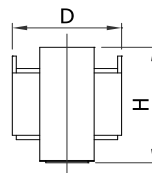
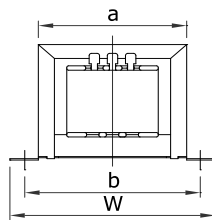
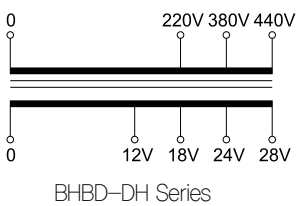
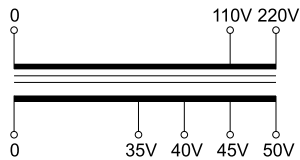


Technical Specifications

Primary Voltage	BHBD-DG	110_R220V
	BHBD-DH	220_R380_440V
Secondary Voltage	BHBD-DG	35_40_R45_50V
	BHBD-DH	12_18_R24_28V
Operating Frequency	50/60Hz	
Insulation Class	B Class	
Standard	KS C	

Typical Applications

Control panel, Transportation network signal control, Machinery, etc.



TO THE WORLD BUMHAN ● WE MAKE FOR YOU ● TO THE WORLD BUMHAN ● WE MAKE FOR YOPU ● TO THE WORLD BUMHAN ● WE MAKE FOR YOU ● TO THE WORLD BUMHAN

Selection Table

Type (형식명)	Specification(사양)			Dimension (외형치수, mm)						Weight (kg)	Remark	
	Pri.(V)	Sec.(V)	Cap.(VA)	W	D	H	a	b	ØA×B			
BHBD -DG3	220V 110V	50V	3	61	32	37	43	52	6×3.5	0.17		
-DG6		25V	6	69	36	42	50	59	6×4	0.27		
-DG12		0	12	83	44	50	60	71		0.42		
-DG24		0	50V	24	98	55	58	69	83	7×4	0.8	
-DG40		0	45V	40	108	61	68	79	95	8×5	1.1	
-DG50		0	40V	50	108	73	69	80	92	7×4.6	1.6	
-DG50		0	35V	50	108	73	69	80	92	7×4.6	1.6	
BHBD -DH12	440V	28V	12	83	44	50	60	71	6×4	0.42		
-DH24	380V	24V	24	98	55	58	69	83	7×4	0.8		
-DH40	220V	18V	40	108	61	68	79	95	8×5	1.1		
-DH40	0	12V	40	108	61	68	79	95	8×5	1.1		

TO THE WORLD BUMHAN ● WE MAKE FOR YOU ● TO THE WORLD BUMHAN ● WE MAKE FOR YOPU ● TO THE WORLD BUMHAN ● WE MAKE FOR YOU ● TO THE WORLD BUMHAN