

REACTORS

Condenser Series Reactors [LV] (콘덴서용 직렬리액터 저압)

BHSRA-L Series

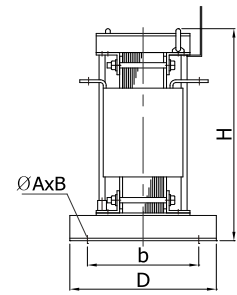
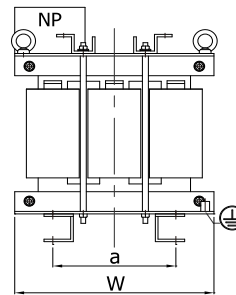
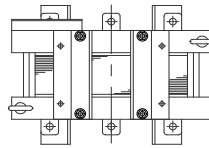
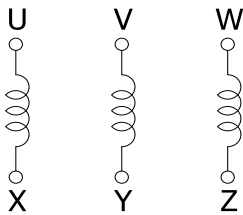


Technical Specifications

Circuit Voltage	220V / 380V / 440V
Operating Frequency	60Hz
Cooling System	Dry
Insulation Class	F Class
Reactance	6%
Standard	IEC, KS C

Typical Applications

Condenser etc.



TO THE WORLD BUMHAN • WE MAKE FOR YOU • TO THE WORLD BUMHAN • WE MAKE FOR YOU • TO THE WORLD BUMHAN • WE MAKE FOR YOU • TO THE WORLD BUMHAN

Selection Table

Type (형식명)	Specification(사양)		Dimension (외형치수, mm)					Weight (kg)	Remark	
	Voltage	Cap.(kVA)	W	D	H	a	b			ØAxB
BHSRA - 1.2L	440V / 380V / 220V	1.2	351	240	352	210	180	13×30	30	
- 1.8L		1.8	351	240	352	210	180		35	
- 2.4L		2.4	351	250	374	210	190		40	
- 3L		3	361	270	385	220	210		45	
- 4.5L		4.5	361	280	416	220	220		50	
- 6L		6	431	290	433	280	230		60	
- 9L		9	431	310	455	280	250		75	
- 12L		12	481	315	475	320	255		80	
- 15L		15	481	330	507	320	270		95	
- 18L		18	501	340	506	330	280		105	
- 24L		24	511	355	506	340	295		120	

TO THE WORLD BUMHAN • WE MAKE FOR YOU • TO THE WORLD BUMHAN • WE MAKE FOR YOU • TO THE WORLD BUMHAN • WE MAKE FOR YOU • TO THE WORLD BUMHAN