



### ■ Features

- For Inverter input
- High performance
- Multi stage
- Small size
- Low cost
- Dual PE system

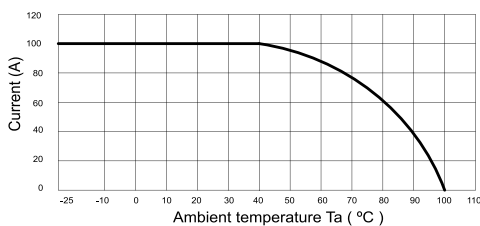
### ■ Typical Applications

- AVR, UPS, Inverter, Converter
- Motor drive equipments
- Factory automation equipment
- Three-phase electricity supply
- ACB Panel, distribution Panel

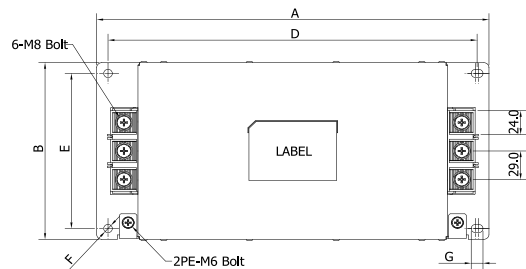
## ■ Technical specifications

Items	BIF-5200-MS	BIF-5250-MS	BIF-5300-MS
Rated Voltage (V <sub>R</sub> )	3Ø, 500Vac		
Operating frequency	50 / 60Hz		
Rated Currents @40°C (I <sub>R</sub> )	200A	250A	300A
Withstanding voltage test	Line to Earth : 2,828Vdc for 1min. or 3,650Vdc for 2sec. ( BHSTD-QUA-Q201 )		
Insulation resistance	500Vdc for 1min. 300MΩ Min. ( BHSTD-QUA-Q202 )		
Voltage drop	1.0V Max. ( BHSTD-QUA-Q204 )		
Temperature range	25/100/21 (-25°C to +100°C), 20~95% RH at Operating & Storage		
Designed according to	IEC/EN 60939 / UL1283 / CSA 22.2 No.8		

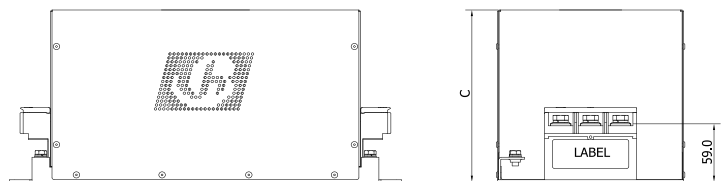
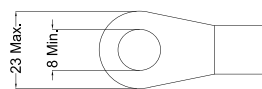
### ■ Derating Curve



### ■ Shape & Dimension (mm)



### ■ Lug ring terminal



### ■ Recommended torque

8.9 ~10.8 N · m

BIF Series	A	B	C	D	E	F	G
200/250A	350	150	140	334	132	Ø6,4	8,4
300A	380	180	175	357.5	158	Ø8,4	11,4