

3Ø, 500Vac (80/100/120/150A) : 삼상 교류 500V 고감쇠 인버터 입력용  
**BIF-5\*\*\*-MS Series (Inverter input filters)**



■ **Features**

For Inverter input  
 High performance  
 Multi stage  
 Small size  
 Low cost  
 Dual PE system

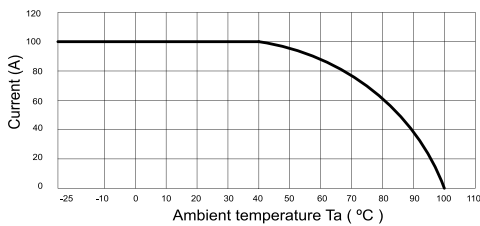
■ **Typical Applications**

AVR, UPS, Inverter, Converter  
 Motor drive equipments  
 Factory automation equipment  
 Three-phase electricity supply  
 ACB Panel, distribution Panel

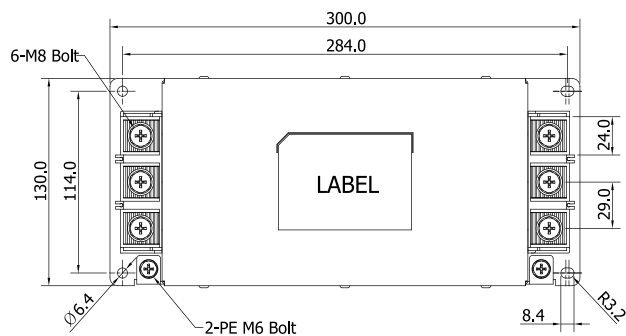
■ **Technical specifications**

Items	BIF-5080-MS	BIF-5100-MS	BIF-5120-MS	BIF-5150-MS
Rated Voltage (V <sub>R</sub> )	3Ø, 500Vac			
Operating frequency	50 / 60Hz			
Rated Currents @40°C (I <sub>R</sub> )	80A	100A	120A	150A
Withstanding voltage test	Line to Earth : 2,828Vdc for 1min. or 3,650Vdc for 2sec. ( BHSTD-QUA-Q201 )			
Insulation resistance	500Vdc for 1min. 300MΩ Min. ( BHSTD-QUA-Q202 )			
Voltage drop	1.0V Max. ( BHSTD-QUA-Q204 )			
Temperature range	25/100/21 (-25°C to +100°C), 20~95% RH at Operating & Storage			
Designed according to	IEC/EN 60939 / UL1283 / CSA 22.2 No.8			

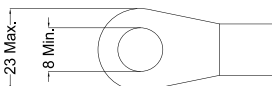
■ **Derating Curve**



■ **Shape & Dimension (mm)**



■ **Lug ring terminal**



■ **Recommended torque**

8,9 ~ 10,8 N · m

